

## EEG ELECTRODE CAP SYSTEMS AND CAPS

### Systems

BN-EEGCAP-SYS BioNomadix Wireless EEG Cap System  
CAP100C Electrode Cap System (Touchproof)

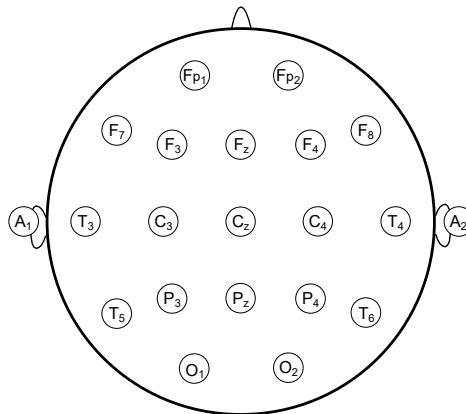
### Cap Only

BN-CAP-SMALL  
BN-CAP-MEDIUM  
BN-CAP-LARGE

CAP-INFANT  
CAP-SMALL  
CAP-MEDIUM  
CAP-LARGE



Electrode Cap System  
(CAP100C shown)



International 10-20 electrode montage



Cap only  
(CAP-MEDIUM shown)

## EEG CAP SYSTEMS

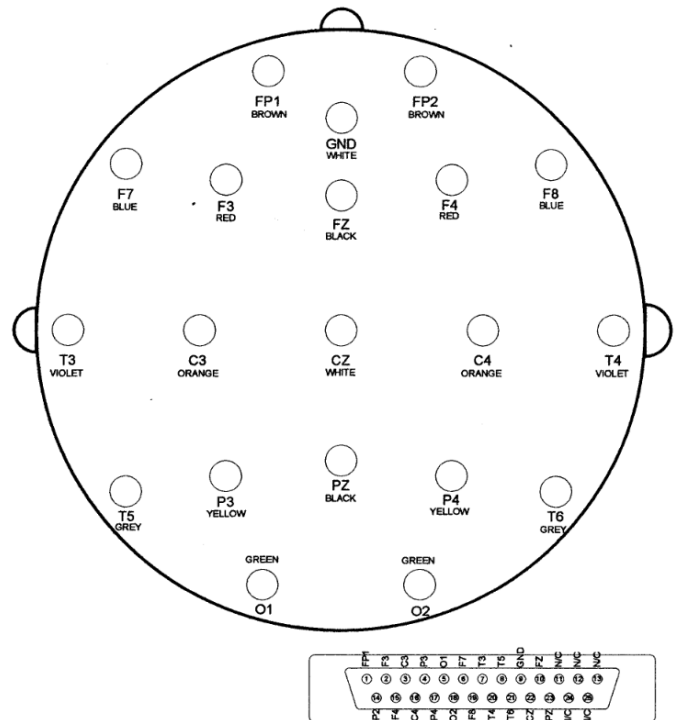
EEG Cap Systems include a medium EEG cap with accessories, plus mating cable to interface an EEG amplifier or MP36/36R unit. The medium electrode cap fits most subjects over age five. Infant, small, and large caps are also available. Systems ship with one medium cap (no substitutions).

The fabric cap has recessed tin electrodes attached to the Lycra-type fabric. The electrodes are pre-positioned in the International 10-20 montage (shown above). Since leads are available for all electrodes, unipolar or bipolar montage recordings can be obtained. The electrode cap comes with two ground electrodes and can also be used for evoked potential investigations (such as ABR). When the electrode cap is in place, EEG recording gel is injected into each electrode (via a central gel access hole) with a blunt-tipped syringe.

Leads from the electrode cap terminate in 1.5 mm female Touchproof sockets, which connect to inputs on

- EEG100C electroencephalogram amplifier
  - To connect to older model EEG100A or EEG100B, add connection cable CBL201.
- BN-EEG2 BioNomadix Wireless EEG transmitter/receiver set
  - See BioNomadix® Product Sheet for more information on BioNomadix® hardware.
- MP3X data acquisition unit via shielded electrode interface cable SS1LA

### ELECTRODE PLACEMENT AND CONNECTOR PIN OUT



## EEG CAP ONLY

Lycra-type fabric cap with recessed tin electrodes pre-positioned in the International 10-20 montage (shown above). Additional or replacement caps are available in a variety of sizes. Caps include a ribbon cable for connection to a cap system.

## CAP SYSTEM SPECIFICATIONS

Components:	1 x medium cap with 19-pin ribbon cable (see CAP-SIZE Specs)
	1 x mating cable with 1.5 mm Touchproof connectors
	2 x earclip reference electrodes
	1 x blunt-tipped syringe
	1 x EEG recording gel
	1 x chest harness (holds cap in place)
	1 x liquid soap (to wash cap after use)
Interface:	EEG100C (add CBL201 adapter for older EEG100A or EEG100B)
	BN-EEG2
	MP36/36R system via SS1LA adapter

## CAP SIZE SPECIFICATIONS

Sizes:	CAP-INFANT	45-50 cm
	BN-CAP-SMALL	CAP-SMALL 50-54 cm
	BN-CAP-MEDIUM	CAP-MEDIUM 54-58 cm
	BN-CAP-LARGE	CAP-LARGE 58-62 cm
Material:	Lycra	
Cable:	Ribbon cable from cap to 19 Touchproof 1.5 mm sockets	
	Length: BN-CAP-SIZE 25 cm or CAP-SIZE 100 cm	

100 cm	WIRE COLOR	RED TIP
WHITE TIP		
Fp1	Brown	Fp2
F3	Red	F4
C3	Orange	C4
P3	Yellow	P4
O1	Green	O2
F7	Blue	F8
T3	Violet	T4
T5	Gray	T6
Gnd	White	Cz
Fz	Black	Pz

Interface:	Cap System BN-EEGCAP-SYS or CAP100C
------------	-------------------------------------